

## Here's how you can help

**Sponsor a child** We have numerous sponsorship schemes that allow you to tailor your sponsorship to your needs and budget. From the individual sponsorship of a specific child's boarding and education to group sponsorships where a church, school or group of friends sponsor. Alternatively, simply become a correspondent where the only commitment is to correspond regularly with the child.



For more information  
please visit our website:  
[www.drgrahamshomes.co.uk](http://www.drgrahamshomes.co.uk)

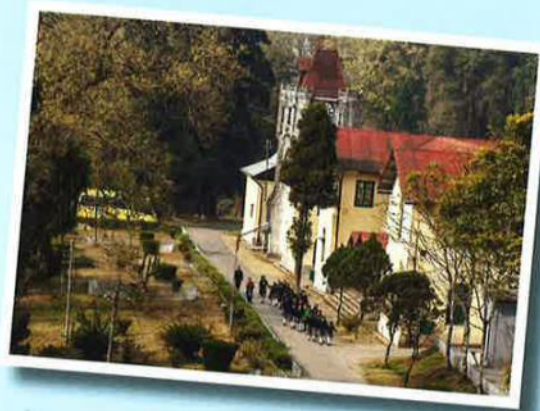
**Make a donation** You can make donations by cheque or standing order with your bank. You can also donate on-line through our website. If you are a UK taxpayer, your donation qualifies for Gift Aid. All monies received will be used for the welfare and education of our sponsored children.

**Get on your bike!** You can take part in various fund-raising events we organise, including coffee mornings, Ceilidh's, curry lunches, card sales and the Bike Bengal charity bike rides. Accept the challenges and have great fun!



**Remember us in your will** Legacies are vitally important. It is thanks to those people who have remembered us in their wills that we have managed to support such a large number of needy children for so many years. For more information, please visit our website.

## Who we are and what we do



### About our committee

The UK Committee is a registered charity based in Scotland that supports the education of needy and impoverished children at Dr Graham's Homes, Kalimpong, India. Our mission is to provide the children with sustainable sponsorships and financial support, offering them an opportunity to achieve self sufficiency and self-esteem through care and education at the homes.

### Watch our video "He Saw The Need"

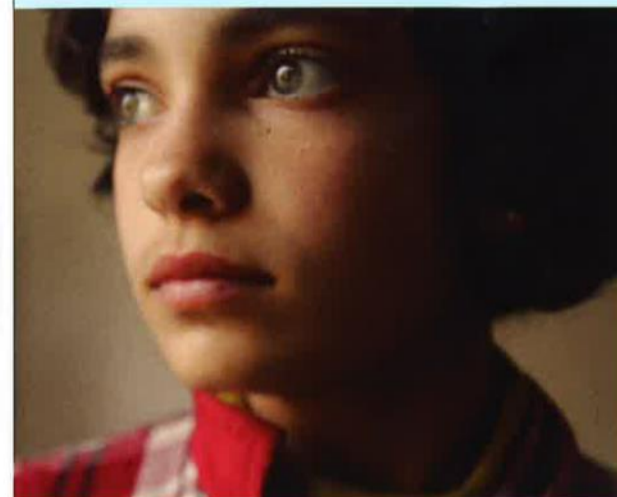
The recently released film is about Dr. Graham's Homes, Kalimpong and the work it does to support needy children. It covers interviews with sponsored children, members of the staff including house-parents and teachers and the views of two UK sponsors who share their "sponsor's experience".

You can view this on our website, or for your free copy please contact our Sponsorship Secretary, at the address below:

Dr Graham's Homes  
37 Campbell Drive, Bearsden  
Glasgow G61 4NF Tel: 0845 094 8839  
[sponsorship@drgrahamshomes.co.uk](mailto:sponsorship@drgrahamshomes.co.uk)  
[www.drgrahamshomes.co.uk](http://www.drgrahamshomes.co.uk)

**DR GRAHAM'S HOMES**  
KALIMPONG INDIA

Building a future for  
children since 1900

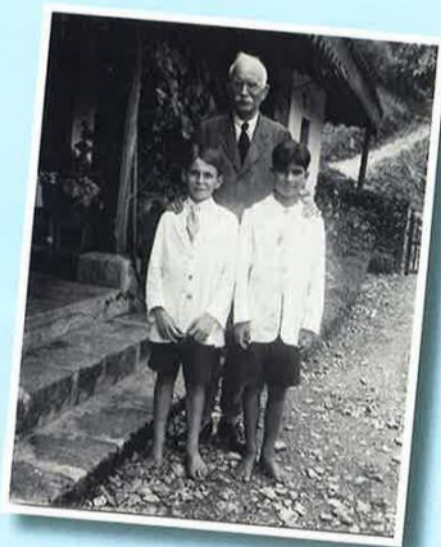


UK Committee for  
Dr Graham's Homes,  
Kalimpong

Charity registered in Scotland  
Number: SC 016341

[www.drgrahamshomes.co.uk](http://www.drgrahamshomes.co.uk)

## A man with a vision



Dr Graham's Homes was founded in 1900 when John Anderson Graham, a Church of Scotland minister working in Kalimpong, took six destitute Anglo-Indian children and placed them in the care of a housemother and a teacher. From these modest beginnings, the Homes has developed into a major boarding and day school. Today, the Homes educates and cares for some 1500 girls and boys. Of these, about 750 are boarders, accommodated in sizeable cottages dotted around the campus on the Kalimpong hillside.

Dr Graham's strategy was to set up committees in Britain and the Commonwealth to fundraise to pay for these children's education.

Remarkably, more than 100 years later, this fund-raising concept continues and the UK Committee is one of many across the globe that has an on-going commitment to fully support around 330 needy children through their education at the Homes.

## The offer of an education

Although the India of today is taking its place amongst the leading economies of the world, sadly there are many hundreds of thousands of children in families who are still struggling to survive and provide their children with a decent upbringing. We feel that the opportunity that Dr Graham's Homes offers is still as important now as it was over one hundred years ago.

Once a child is offered a place in the Homes, the UK Committee guarantees funding for the full period of their schooling and boarding. Some arrive as infants and are cared for in the Lucia King Nursery; then the Kindergarten, Junior and Senior School follow. Sponsorship continues even after schooling, with many moving to Colleges to further their education.

The vision is to bring children together in a safe family environment giving them stability and confidence to go out into the world.

The Homes admits children of any religious faith or culture but always maintains its strong Christian roots and traditions.



## A very personal relationship

Dr. Graham's Homes is situated at an altitude of 4,500 ft in the foothills of the Himalayas overlooking the small trading town of Kalimpong. The UK Committee works very closely with the school's Board of Management to ensure that the welfare and education of the sponsored child is paramount.

Our sponsorship schemes are very personal. Sponsors are encouraged to correspond with the children and can expect to receive replies. In addition our Sponsorship Secretary receives school reports so that both sponsor and UK Committee can follow each child's progress.

For children who are alone or away from their family, a letter from a sponsor means a great deal—somebody out there is interested in them! For the sponsor, there is much satisfaction seeing their sponsored child grow into an independent and confident young adult.

Each year we provide the opportunity to visit the homes on a holiday, and sponsors and friends have the opportunity to meet each other at our London curry lunch and Edinburgh Annual General Meeting. You will also find, on a smaller scale, fund-raising events all over the country.

Your support will make a real difference  
to the children of Dr. Graham's Homes

